



TEKNOWARE OMNI **RGB+W**

LED spotlights with RGB mood light for the automotive industry

Versatile spotlight solutions improve travel safety and comfort, day and night. Teknoware Omni RGB+W spotlights can be used to implement main, spot, night and reading lights or emergency lighting. By using different colour tones and RGB light dimming, you create the right mood for travel: premium interior lighting adds to the experience of comfort and relaxation. Dimming also has many other benefits, for example, reducing glare, increasing the lifetime of the light units and lowering energy consumption.

Teknoware Omni RGB+W is a LED spotlight specially designed for use in the automotive industry. Omni's wide range of body colours and mounting options offer multiple choices for a variety of applications and systems. The whole product range is available with different supply voltages and colour temperatures.

FACTS IN BRIEF



FOR AUTOMOTIVES



VERSATILE



STYLISH



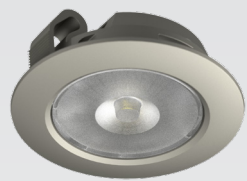
COMPACT



EASY TO INSTALL



Teknoware Omni Recessed RGB+W



12 VDC White non-dimmable, RGB dimmable

Black RAL9005		Grey RAL7046		White RAL9003	
Product ID	Colour temperature	Product ID	Colour temperature	Product ID	Colour temperature
TVP7711RGBWB	RGB + 3000 K	TVP7711RGBWG	RGB + 3000 K	TVP7711RGBWW	RGB + 3000 K
TVP7711RGBNB	RGB + 4000 K	TVP7711RGBNG	RGB + 4000 K	TVP7711RGBNW	RGB + 4000 K
TVP7711RGBCB	RGB + 5000 K	TVP7711RGBCG	RGB + 5000 K	TVP7711RGBCW	RGB + 5000 K

24 VDC White non-dimmable, RGB dimmable

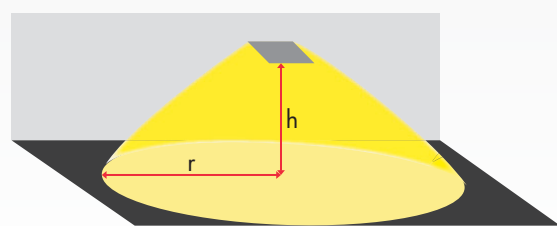
Black RAL9005		Grey RAL7046		White RAL9003	
Product ID	Colour temperature	Product ID	Colour temperature	Product ID	Colour temperature
TVP7701RGBWB	RGB + 3000 K	TVP7701RGBWG	RGB + 3000 K	TVP7701RGBWW	RGB + 3000 K
TVP7701RGBNB	RGB + 4000 K	TVP7701RGBNG	RGB + 4000 K	TVP7701RGBNW	RGB + 4000 K
TVP7701RGBCB	RGB + 5000 K	TVP7701RGBCG	RGB + 5000 K	TVP7701RGBCW	RGB + 5000 K

Product information

Diameter	ø 50 mm
Installation hole	ø 42 mm
Depth	20 mm
Supply cables	~ 80 mm

Electrical characteristics

Light input voltage	12 VDC (9-16 VDC) 24 VDC (18-32 VDC)
Input current	12 VDC
Nominal	105 mA
Min max	35 - 155 mA
Input current	24 VDC
Nominal	52 mA
Min max	10 - 85 mA



Light output	~150 lumens h=1.0 m, r=0.5 m Peak: >230 lux, >150 lux @ 0.5 m radius
--------------	---

LED information

Colour temperature	3000 K, 4000 K, 5000 K
Colour rendering index	>80
Lumen maintenance	>50 000 h L70

Material characteristics

Material of the circuit board	FR-4
Material of the frame and lens	Polycarbonate

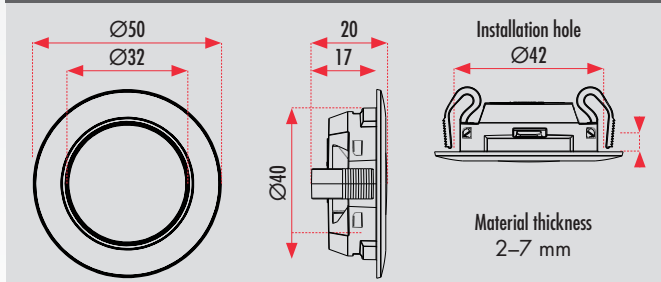
Environmental conditions

Operating temperature	-25 °C ... +70 °C
Storage	-40 °C ... +70 °C

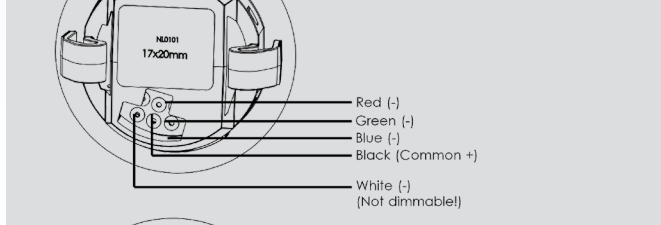
Product features

- Electromagnetic compatibility UNECE R10
- Frame and lens materials UNECE R118 approved
- Protected against reverse input voltage polarity

Dimensions [mm]



Wiring diagram



Wiring diagram with controller

