



# TEKNOWARE INTERIOR PANELS

---

## CEILING, WALL AND DADO PANELS FOR ROLLING STOCK

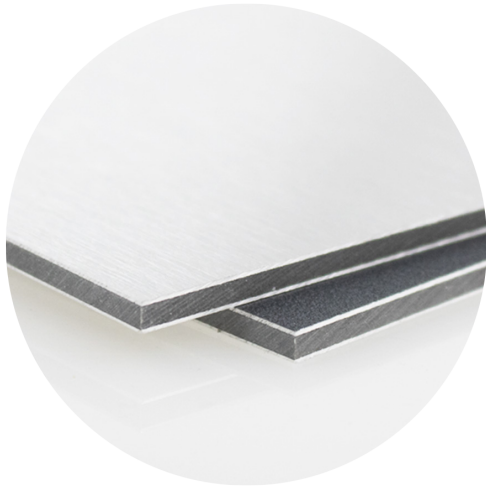
Teknoware has solutions for all aspects of train interiors, including ceiling, wall and dado panels that bring both functional and aesthetic qualities to the interior of trains, metros and trams.

Additional elements such as lights, edge trims, power sockets, sound dampening, gaskets, and liners to create the perfect interior solution can be added for almost any type of railway carriage manufactured today—or in the future.

## REFURBISHMENTS AND BRAND NEW PROJECTS

We recognise that, in time, older railway carriages may require an upgrade to bring them up to speed with the latest technological and aesthetic market trends. We are just as happy carrying out refurbishments as we are working on entirely new projects.

Technologies such as high-quality honeycomb or composite paneling and high-pressure laminates ensure our solutions combine lightness and strength and retain their quality for many years.



Weight	
Sample weights	5.9 kg/m <sup>2</sup> (3 mm panel) 7.6 kg/m <sup>2</sup> (4 mm panel)
Dimensions	
Panel length	2000-6800 mm
Panel width	1000, 1250, 1500, 1750 mm
Composite thickness	3 mm or 4 mm (±0.2 mm)
Surface layer thickness	0.5 mm
Appearance	
Surface finish	Matt finish as standard, other options available on request
Colour	Solid colour as standard, wet painting indoors or ready-made surface treatment
Optional surface treatment	Decorative vinyl or laminate surface
Standards and requirements	
<ul style="list-style-type: none"> <li>Both ALUCOBOND® PLUS and ALUCOBOND® A2 materials without painting meet the requirements of class HL3 according to EN 45545-2 for R1 use in railway vehicles.</li> <li>ALUCOBOND® PLUS has MED approval for shipbuilding.</li> </ul>	

Weight	
Sample weights	4.7 kg/m <sup>2</sup> (6 mm panel) 5 kg/m <sup>2</sup> (10 mm panel)
Dimensions	
Panel length	max 4000 mm
Panel width	max 1500 mm
Core cell dimensions	9.6 mm, 12.8 mm, 19.2 mm
Composite thickness	6-100 mm (6, 8, or 10 mm as standard, ±0.2 mm)
Surface layer thickness	0.5 mm, 0.7 mm, 1.0 mm
Appearance	
Surface finish	Bare aluminium, epoxy primer
Colour	Wet painting indoors or ready-made surface treatment
Optional surface treatment	Decorative vinyl or laminate surface
Standards and requirements	
<ul style="list-style-type: none"> <li>Honeycomb panels without painting meet HL3 requirements according to EN 45545-2 for R1 use in railway vehicles.</li> <li>Honeycomb panels meet EN 13501-1:2018 (A2 – s1, d0) for the construction industry.</li> <li>Honeycomb panels have MED approval for shipbuilding.</li> </ul>	



CUTTING



DRILLING  
MILLING



BENDING



FOLDING



JOINTING  
FIXING



LACQUERING  
SPRAYING



PRINTING



GLUING



LAMINATING



CUTTING



DRILLING  
MILLING



BENDING



FOLDING



JOINTING  
FIXING



LACQUERING  
SPRAYING



PRINTING

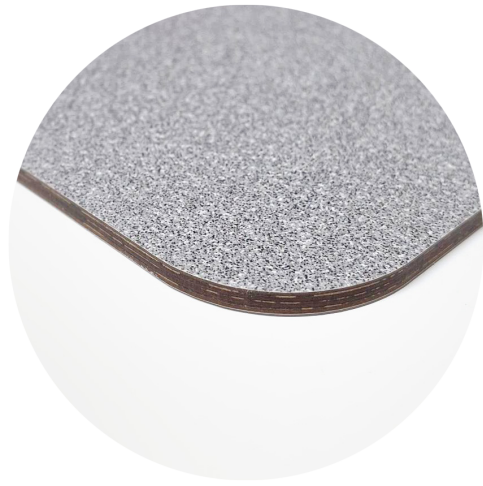


GLUING



LAMINATING

## Compact HPL



Weight	
Sample weight	1.35 kg/m <sup>2</sup> (per 1 mm panel)
Dimensions	
Panel length	max 3000 mm (±3 mm)
Panel width	max 1250 mm (±1.25 mm)
Min. radius on 90° bend	15 mm (±5.0)
Min. radius on 120° bend	15 mm (±5.0)
Composite thickness	2, 2.5, 3, 4, 5, 6, 8 mm panel (±0.2 mm)
Appearance	
Surface finish	Matt finish as standard, other options available on request
Colour	Solid colour as standard Colour of the edges is dark brown
Optional surface treatment	Edges and corners can be rounded. HPL can be used to form two-dimensional shapes (3D shapes are not possible).
Standards and requirements	
<ul style="list-style-type: none"> <li>Compact HPL meets the fire safety requirements for railway interior materials according to EN 45545-2 HL2, ensuring compliance with hazard level 2 for flame resistance, smoke density, and toxicity.</li> </ul>	



CUTTING



DRILLING  
MILLING



FOLDING

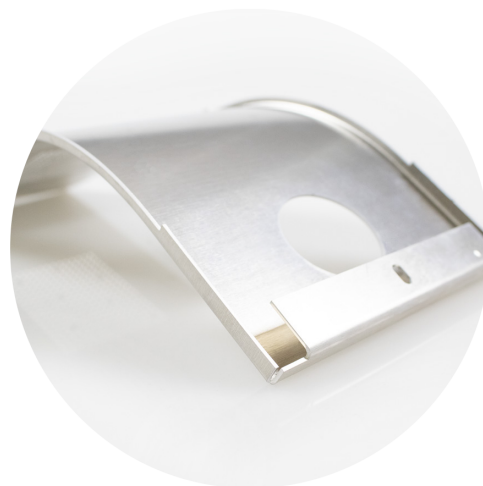


GLUING



LAMINATING

## Sheet Aluminium Panel



Weight	
Sample weight	2.7 kg/m <sup>2</sup> (on 1 mm panel)
Dimensions	
Thickness	0.5–5 mm
Panel length	max 4000 mm
Panel width	1500 mm
Appearance	
Colour	Wet painting or powder coating
Optional surface treatment	Decorative vinyl or HPL laminate surface. Very versatile material, both on its own and when combined with other panel materials.
Standards and requirements	
<ul style="list-style-type: none"> <li>Aluminium panels are non-combustible and can be engineered to meet all requirements, for example EN 45545-2.</li> </ul>	



CUTTING



DRILLING  
MILLING



BENDING



FOLDING



PUNCHING  
JOINTING  
FIXING



LACQUERING  
SPRAYING



PRINTING



GLUING



LAMINATING

