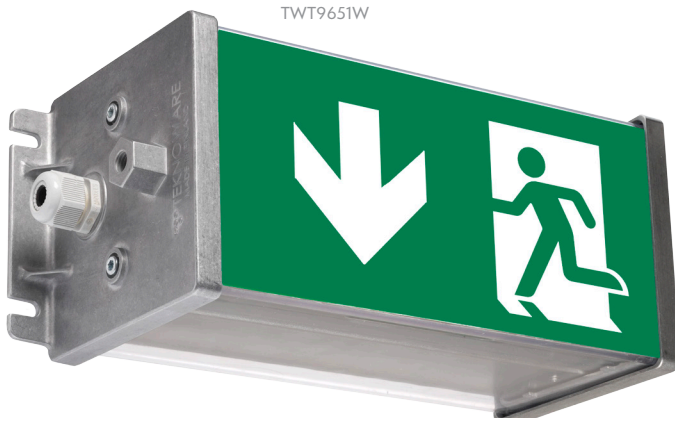
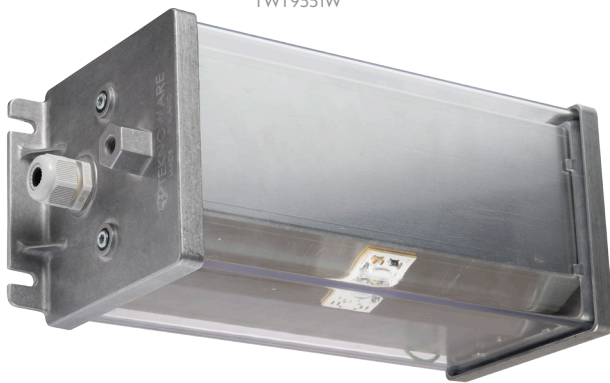



SAFE 95 & ESC 96



TWT9651W



TWT9551W


24 M VIEWING DISTANCE

FOR SURFACE MOUNTING

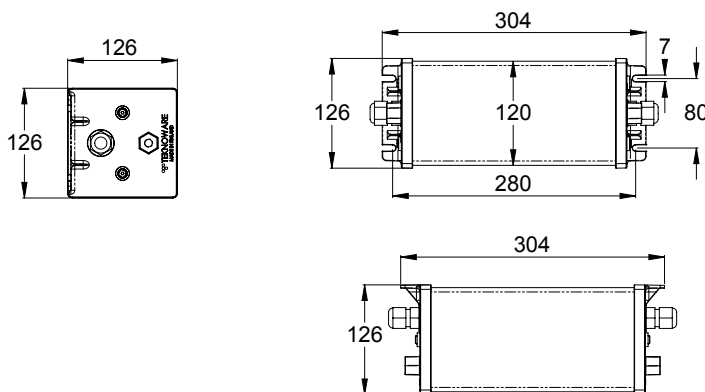
PROTECTION CLASS: IP67

Safe 95 and ESC 96 have metal frames and are suitable for surface mounting on wall.

Safe 95 is emergency luminaire and ESC 96 is exit luminaire. ESC 96 can be used as 1-sided with 24 m viewing distance pictogram.

Safe 95 and ESC 96 are suitable for demanding conditions.

DIMENSIONS




EMERGENCY LIGHTING
HIGHLIGHTING
SAFETY

TEKNOWARE[®]
Lahti | Finland




Ilmarisentie 8, FI-15200 Lahti
Tel. +358 3 883 020
emexit@teknoware.com
www.teknoware.com

CENTRALLY SUPPLIED LUMINAIRES: ESC 96

Product code	Supply voltage	Max input power	Operation mode	Temperature range	Electrical installation	Weight (kg)
TWT9651W (exit luminaire)	220-240 V AC/DC	9,2 VA / 2,9 W	CBU / C + IC	-30... +50°C	3 x 2,5 mm ² -o- 	1,280


| Light source: LED | Protection rating: IP67

SEPARATELY ORDERED PICTOGRAMS (ESC 96)

Product code	Pictogram	Product description
PB9604		Down arrow
PB9606		Right arrow
PB9605		Left arrow

| Pictograms in the table are 1-sided

CENTRALLY SUPPLIED LUMINAIRES: SAFE 95

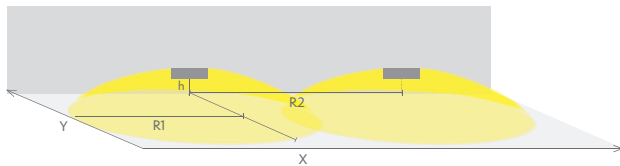
Product code	Supply voltage	Max input power	Luminous flux (lm)	Operation mode	Temperature range	Electrical installation	Weight (kg)
TWT9551W (emergency luminaire)	220-240 V AC/DC	11,5 VA / 6,9 W	160 lm	CBU	-30... +50°C	3 x 2,5 mm ² -o- 	1,256

| Light source: LED | Protection rating: IP67

LIGHT DISTRIBUTION TABLES

Emergency lighting for escape routes (ceiling mounting)

| Table of 1 lux for escape routes in the middle line according to the norm EN 1838.
| Level of measurement 0,02 m, measurement result with battery operation



| R1 distance from wall (X axis)
| R2 installation distance between luminaires (X axis)

TWT9551W

Mounting height (m)	Below the luminaire lux	R1 (m)	R2 (m)
		1 lux	1 lux
0,625	100	3,5	8